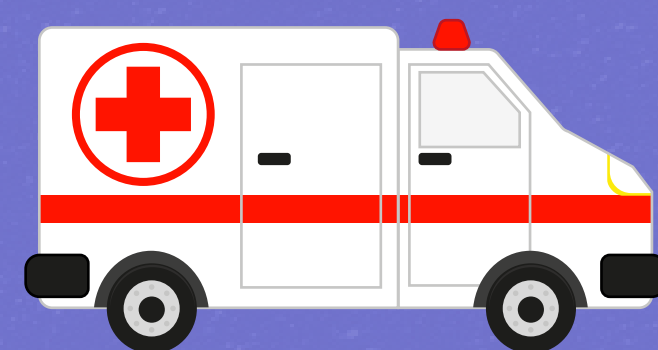


WHAT HAPPENS TO SUSPECT CASES?

1

All suspect cases are reported to the Ministry of Health promptly and transferred to hospitals via ambulances to reduce their exposure to the general public.



2

Suspect cases are isolated in hospitals. Many suspect cases turn out to have other mild diseases such as the common flu.



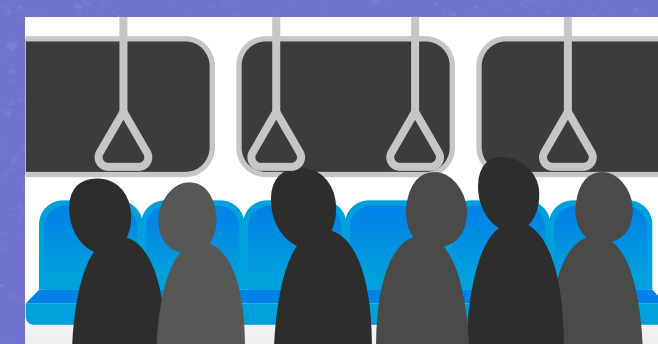
3

Ambulance crews who ferry suspect cases to hospitals, wear personal protective equipment, for they come into close contact with patients and are at higher risk of infection.



4

The risk of infection from transient contact is low. There is no need to avoid places where suspected and confirmed cases have been.



IF YOU HAVE TRAVELLED OVERSEAS AND FEEL UNWELL,

1

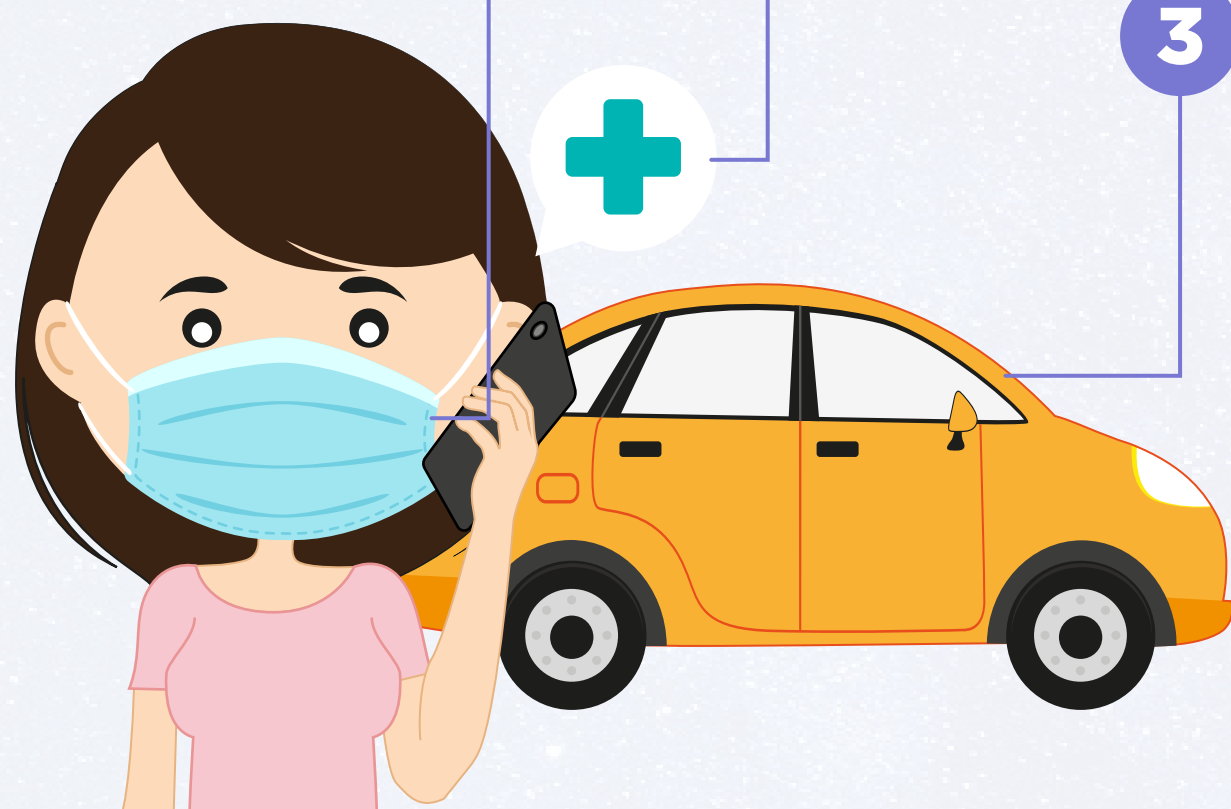
Wear a surgical mask and see a doctor promptly.

2

Call ahead to the clinic to inform the doctor of your symptoms and travel history.

3

Take private transport to the clinic.



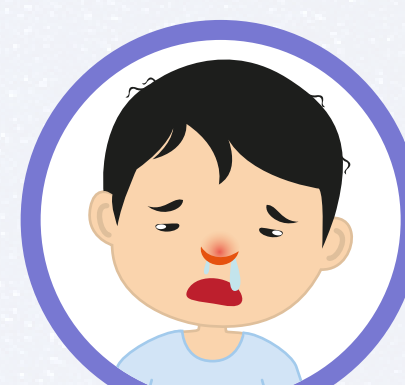
SYMPTOMS OF NOVEL CORONAVIRUS INFECTION INCLUDE



Fever



Cough



Runny nose



Shortness of breath



Get the latest on the novel coronavirus and other important Government information by signing up for the Gov.sg WhatsApp channel (www.go.gov.sg/whatsapp), or at the MOH website (www.moh.gov.sg)



MINISTRY OF HEALTH
SINGAPORE

gov
.sg