



BUDGET
2021

Emerging Stronger Together

COVID-19 Resilience Package

> Public Health and Safe Re-Opening

Vaccination programme to safeguard the health of our people



> Support for Workers and Businesses

- Additional wage support through extension of Jobs Support Scheme

- Tier 1 sectors (aviation, aerospace, and tourism)
 - 30% support for Apr to Jun '21 wages; 10% support for Jul to Sep '21 wages
- Tier 2 sectors (e.g. retail, arts and culture, food services, and built environment)
 - 10% support for Apr to Jun '21 wages

> Support for Specific Sectors

- Provide targeted support and extend cost relief for the Aviation sector
- COVID-19 Driver Relief Fund for taxi and private hire car drivers
- Extension of Arts and Culture Resilience Package & Sports Resilience Package



Singapore Green Plan 2030

- Technology

- \$60 million Agri-Food Cluster Transformation Fund

- Transportation

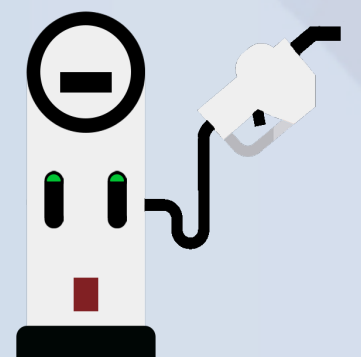
- Public and private partnerships for Electric Vehicles-related initiatives
- Narrow cost differential between electric cars and internal combustion engine cars

- Green Financing

- Issue green bonds on select public infrastructure projects

- Actions of our People

- GreenGov.SG initiative for the public sector
- Enterprise Sustainability Programme



Read more at
go.gov.sg/budget-2021





Emerging Stronger Together

BUDGET
2021

Strengthening our Social Compact

> Emerging Stronger as a Society



- Short-Term Relief

▪ Household Support Package

- GST Voucher – Cash Special Payment of **\$200** for lower-income Singaporeans
- GST Voucher – U-Save Special Payment of **\$120** to **\$200** for eligible HDB households
- Extension of Service and Conservancy Charges Rebate for another year
- Top-ups to Child Development Account, Edusave Account or Post-Secondary Education Account of **\$200** per Singaporean child
- **\$100** worth of Community Development Council Vouchers per household for participating heartland shops and hawker centres

- Looking further ahead

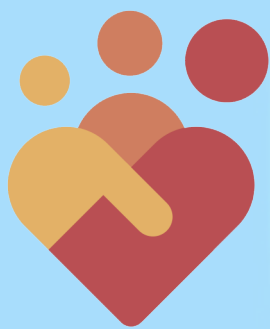
- Increase in budget allocation for the Senior Worker Early Adopter Grant and Part-Time Re-employment Grant
- Expand ComLink nationwide to cover 14,000 families with children
- Inclusive Support Programme pilot to better support children with developmental needs

> Emerging Stronger as a Community

- Extend 250% tax deduction for donations to Institutions of a Public Character (IPCs) to end-'23
- Extend government matching under Enhanced Fund-Raising Programme by one year
- Extend Community Chest's SHARE as One matching grant to FY23
- Introduce the Change for Charity Grant
- Extend Business and IPC Partnership Scheme to end-'23
- Care and Innovation Fund

Read more at
go.gov.sg/budget-2021





Emerging Stronger Together

BUDGET
2021

Emerging Stronger with Skilled Workers and Innovative Businesses

> Vibrant Business Sector and Ecosystem for Innovation

- **Securing Our Position as a Key Aviation Hub**
 - Invest in on-arrival testing and biosafety systems
 - Quickly verify authenticity of digital COVID-19 test results and vaccination records through the Notarise and Verify system
- **Creating Platforms for Nurturing Creative Ideas**
 - Corporate Venture Launchpad
 - Open Innovation Platform
 - Global Innovation Alliance
 - Singapore Intellectual Property Strategy 2030
- **Deepening our Global and Southeast Asia Partnerships**

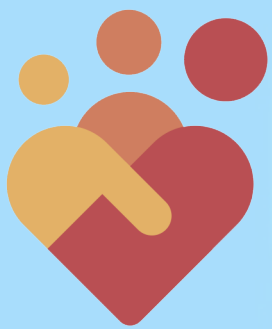


> Suite of Capital Tools to Co-Fund Transformation

- **Venture Debt for High-Growth Enterprises**
 - Enhance Enterprise Financing Scheme - Venture Debt programme
- **Co-Funding Transformation of Mature Enterprises (include SMEs and LLEs)**
 - Emerging Technology Programme
 - Chief Technology Officer-as-a-Service
 - Digital Leaders Programme
 - Enhance Productivity Solutions Grant - Job Redesign
- **Equity Investments in Large Local Enterprises**
 - Co-invest in LLEs via the Local Enterprises Funding Platform
- **Transformation of Value Chains**
 - Growth and Transformation Scheme for the Built Environment sector

Read more at
go.gov.sg/B2021





BUDGET
2021

Emerging Stronger Together

Emerging Stronger with Skilled Workers and Innovative Businesses



> Skilled Human Capital and Talent

- SGUnited Jobs and Skills Package

- Extend support for SGUnited Skills, SGUnited Traineeships, SGUnited Mid-Career Pathways Programme
- Extend hiring window for Jobs Growth Incentive to end-Sep '21

- Innovation and Enterprise Fellowship Programme

- Build up tech talent in innovation and enterprise, especially in deep technology areas

- Enhancing salaries of Healthcare workers

- Includes workers in public healthcare institutions, publicly-funded community hospitals and long-term care service providers

- Extend Wage Credit Scheme for a year at a co-funding level of 15%

- Managing Local-Foreign worker mix and industry transformation

- Extend Capability Transfer Programme to end-Sep '24
- Cuts in Manufacturing S Pass Sub-Dependency Ratio Ceiling (sub-DRC)



Read more at
go.gov.sg/B2021

